



# NFPA 285 W/ BRICK ASSEMBLY REQUIREMENTS

- 285B-1 – CONTINUOUS GYPSUM CONDITION #1
- 285B-2 – CONTINUOUS GYPSUM CONDITION #2
- 285B-3 – DISCONTINUOUS GYPSUM CONDITION #1
- 285B-4 – DISCONTINUOUS GYPSUM CONDITION #2

©COPYRIGHT SYNTHEON INC.. ALL RIGHTS RESERVED. THESE DRAWINGS AND MATERIALS CONTAIN INFORMATION AND DESIGNS WHICH ARE CONFIDENTIAL AND PROPRIETARY TO SYNTHEON INC. SYNTHEON INC. OWNS ALL RIGHTS IN AND TO THESE DRAWINGS AND MATERIALS, INCLUDING, BUT NOT LIMITED TO, COPYRIGHT, TRADE SECRET AND OTHER INTELLECTUAL PROPERTY RIGHTS. NO ONE MAY USE, COPY OR DISTRIBUTE ANY PORTION OF THESE DRAWINGS OR MATERIALS WITHOUT THE EXPRESS WRITTEN CONSENT OF SYNTHEON INC.

SYNTHEON INC. ASSUMES NO LIABILITY FROM INCORRECT APPLICATION OR INSTALLATION OF THE STEEL FRAMING SYSTEM. THE USE OF ANY COLD FORMED STEEL PRODUCTS THAT ARE NOT RECOMMENDED BY SYNTHEON INC. IS STRICTLY PROHIBITED AND WILL RESULT IN NULLIFICATION OF THE PROFESSIONAL ENGINEER'S SEAL AND ANY IMPLIED SUPPORT BY SYNTHEON INC. DESIGN GROUP. IF THE TITLE SHEET DOES NOT HAVE A PROFESSIONAL ENGINEERS STAMP THEN COMPLETE AND DETAILED EVALUATION FOR PRODUCT SUITABILITY MUST BE ACCOMPLISHED BY OWNER'S ARCHITECT OR STRUCTURAL ENGINEER.

**Revisions**

REV	Description	DATE
△		
△		
△		



ADVANCING THE BUILDING ENVELOPE

1555 Coraopolis Heights Road  
Moon Township, Pennsylvania  
Phone: 412-490-5037  
Fax: 412-490-5066



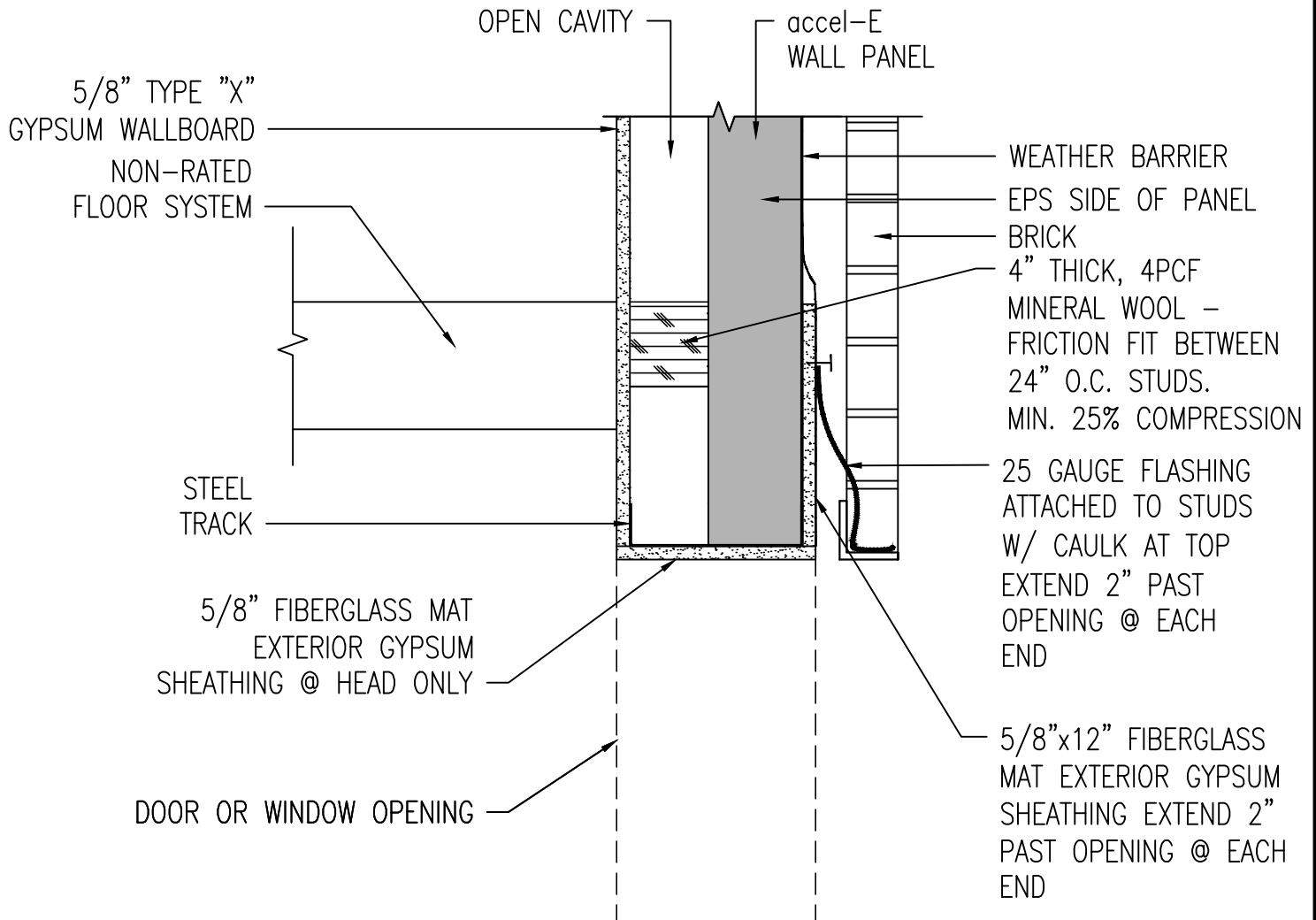
**Project Information**

NFPA 285  
ASSEMBLY REQUIREMENT  
FOR BYPASS  
CONSTRUCTION WITH  
BRICK

**Sheet Information**

DATE:	
SCALE:	NONE
DESIGNER:	HUGHES ASSOCIATES
DRAWN BY:	BPC
CHECKED BY:	

**TITLE**



○ CONTINUOUS GYPSUM CONDITION #1  
(CONTINUOUS INTERIOR GYPSUM WITHOUT GAP AT FLOOR SYSTEM)

© COPYRIGHT SYNTHEON INC. ALL RIGHTS RESERVED. THESE DRAWINGS AND MATERIALS CONTAIN INFORMATION AND DESIGNS WHICH ARE CONFIDENTIAL AND PROPRIETARY TO SYNTHEON INC. SYNTHEON INC. OWNS ALL RIGHTS IN AND TO THESE DRAWINGS AND MATERIALS, INCLUDING, BUT NOT LIMITED TO, COPYRIGHT, TRADE SECRET AND OTHER INTELLECTUAL PROPERTY RIGHTS. NO ONE MAY USE, COPY OR DISTRIBUTE ANY PORTION OF THESE DRAWINGS OR MATERIALS WITHOUT THE EXPRESS WRITTEN CONSENT OF SYNTHEON INC.

SYNTHEON INC. ASSUMES NO LIABILITY FROM INCORRECT APPLICATION OR INSTALLATION OF THE STEEL FRAMING SYSTEM. THE USE OF ANY COLD FORMED STEEL PRODUCTS THAT ARE NOT RECOMMENDED BY SYNTHEON INC. IS STRICTLY PROHIBITED AND WILL RESULT IN NULLIFICATION OF THE PROFESSIONAL ENGINEER'S SEAL AND ANY IMPLIED SUPPORT BY SYNTHEON INC. DESIGN GROUP. IF THE TITLE SHEET DOES NOT HAVE A PROFESSIONAL ENGINEER'S STAMP THEN COMPLETE AND DETAILED EVALUATION FOR PRODUCT SUITABILITY MUST BE ACCOMPLISHED BY OWNER'S ARCHITECT OR STRUCTURAL ENGINEER.

Revisions

REV	Description	DATE

**SYNTHEON**  
ADVANCING THE BUILDING ENVELOPE

1555 Coraopolis Heights Road  
Moon Township, Pennsylvania  
Phone: 412-490-5037  
Fax: 412-490-5066

**accetE**  
Steel Thermal Efficient Panel

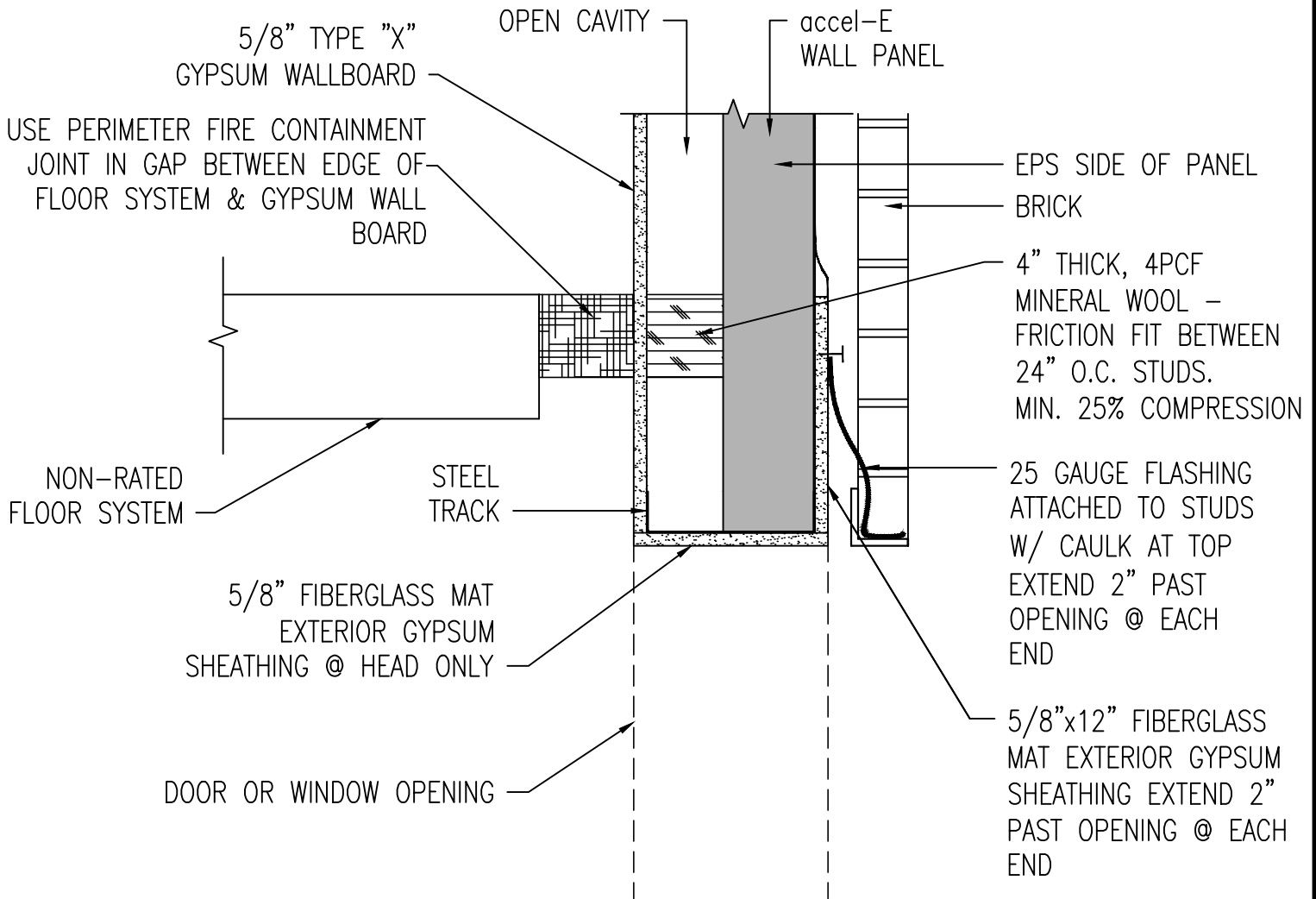
Project Information

NFPA 285  
ASSEMBLY REQUIREMENT  
FOR BYPASS  
CONSTRUCTION WITH  
BRICK

Sheet Information

DATE:	
SCALE:	1 1/2" = 1'-0"
DESIGNER:	HUGHES ASSOCIATES
DRAWN BY:	CRB
CHECKED BY:	DKC

**285B-1**



○ CONTINUOUS GYPSUM CONDITION #2  
 (CONTINUOUS INTERIOR GYPSUM WITH GAP AT FLOOR SYSTEM)

© COPYRIGHT SYNTHEON INC. ALL RIGHTS RESERVED. THESE DRAWINGS AND MATERIALS CONTAIN INFORMATION AND DESIGNS WHICH ARE CONFIDENTIAL AND PROPRIETARY TO SYNTHEON INC. SYNTHEON INC. OWNS ALL RIGHTS IN AND TO THESE DRAWINGS AND MATERIALS, INCLUDING, BUT NOT LIMITED TO, COPYRIGHT, TRADE SECRET AND OTHER INTELLECTUAL PROPERTY RIGHTS. NO ONE MAY USE, COPY OR DISTRIBUTE ANY PORTION OF THESE DRAWINGS OR MATERIALS WITHOUT THE EXPRESS WRITTEN CONSENT OF SYNTHEON INC.

SYNTHEON INC. ASSUMES NO LIABILITY FROM INCORRECT APPLICATION OR INSTALLATION OF THE STEEL FRAMING SYSTEM. THE USE OF ANY COLD FORMED STEEL PRODUCTS THAT ARE NOT RECOMMENDED BY SYNTHEON INC. IS STRICTLY PROHIBITED AND WILL RESULT IN NULLIFICATION OF THE PROFESSIONAL ENGINEER'S SEAL AND ANY IMPLIED SUPPORT BY SYNTHEON INC. DESIGN GROUP. IF THE TITLE SHEET DOES NOT HAVE A PROFESSIONAL ENGINEERS STAMP THEN COMPLETE AND DETAILED EVALUATION FOR PRODUCT SUITABILITY MUST BE ACCOMPLISHED BY OWNER'S ARCHITECT OR STRUCTURAL ENGINEER.

Revisions

REV	Description	DATE
△		
△		
△		

**SYNTHEON**

ADVANCING THE BUILDING ENVELOPE

1555 Coraopolis Heights Road  
 Moon Township, Pennsylvania  
 Phone: 412-490-5037  
 Fax: 412-490-5066

**accetE**  
 Steel Thermal Efficient Panel

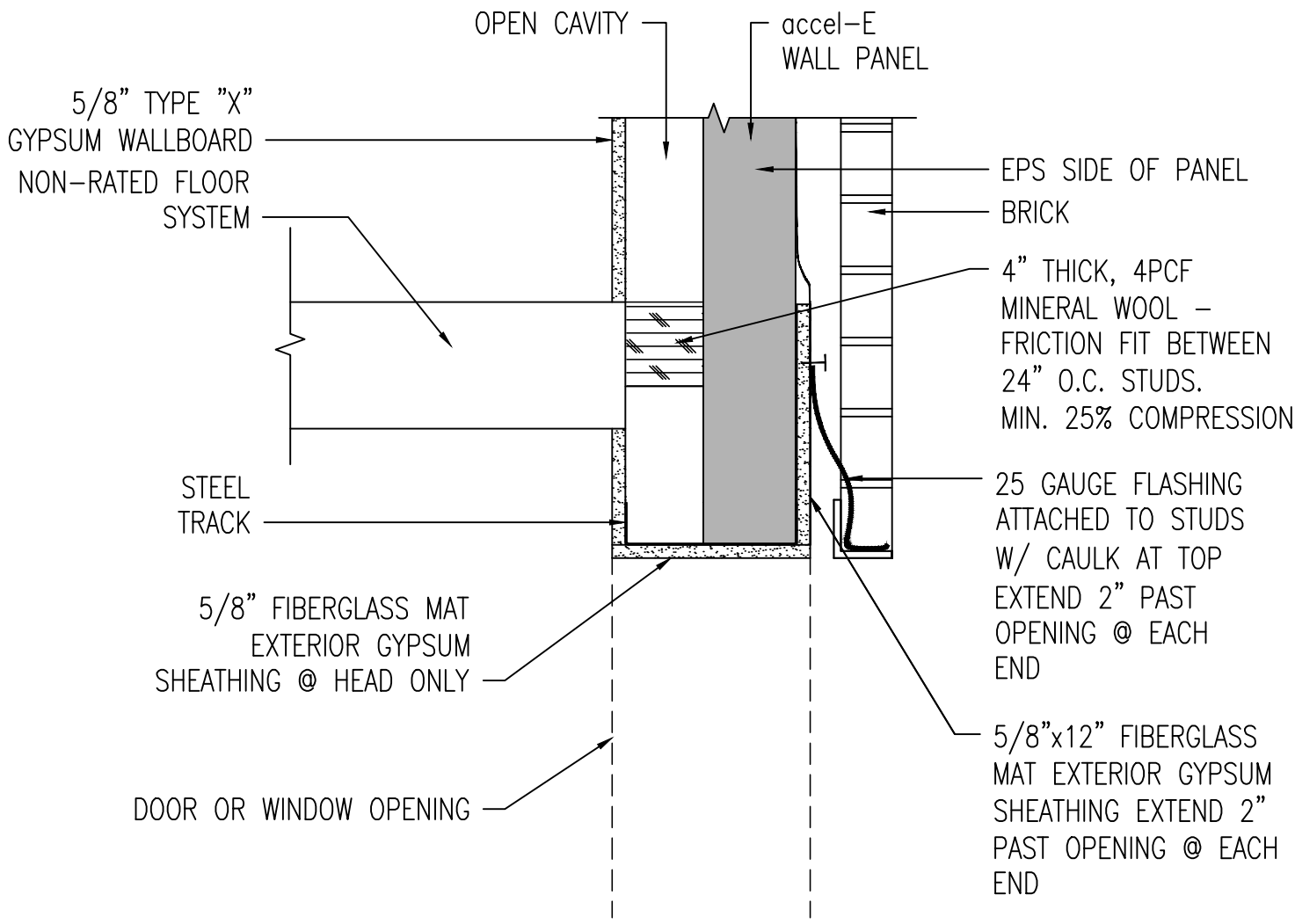
Project Information

NFPA 285  
 ASSEMBLY REQUIREMENT  
 FOR BYPASS  
 CONSTRUCTION WITH  
 BRICK

Sheet Information

DATE:	
SCALE:	1 1/2" = 1'-0"
DESIGNER:	HUGHES ASSOCIATES
DRAWN BY:	CRB
CHECKED BY:	DKC

**285B-2**



○ DISCONTINUOUS GYPSUM CONDITION #1  
 (DISCONTINUOUS INTERIOR GYPSUM WITHOUT GAP AT FLOOR SYSTEM)

© COPYRIGHT SYNTHEON INC. ALL RIGHTS RESERVED. THESE DRAWINGS AND MATERIALS CONTAIN INFORMATION AND DESIGNS WHICH ARE CONFIDENTIAL AND PROPRIETARY TO SYNTHEON INC. SYNTHEON INC. OWNS ALL RIGHTS IN AND TO THESE DRAWINGS AND MATERIALS, INCLUDING, BUT NOT LIMITED TO, COPYRIGHT, TRADE SECRET AND OTHER INTELLECTUAL PROPERTY RIGHTS. NO ONE MAY USE, COPY OR DISTRIBUTE ANY PORTION OF THESE DRAWINGS OR MATERIALS WITHOUT THE EXPRESS WRITTEN CONSENT OF SYNTHEON INC.

SYNTHEON INC. ASSUMES NO LIABILITY FROM INCORRECT APPLICATION OR INSTALLATION OF THE STEEL FRAMING SYSTEM. THE USE OF ANY COLD FORMED STEEL PRODUCTS THAT ARE NOT RECOMMENDED BY SYNTHEON INC. IS STRICTLY PROHIBITED AND WILL RESULT IN NULLIFICATION OF THE PROFESSIONAL ENGINEER'S SEAL AND ANY IMPLIED SUPPORT BY SYNTHEON INC. DESIGN GROUP. IF THE TITLE SHEET DOES NOT HAVE A PROFESSIONAL ENGINEERS STAMP THEN COMPLETE AND DETAILED EVALUATION FOR PRODUCT SUITABILITY MUST BE ACCOMPLISHED BY OWNER'S ARCHITECT OR STRUCTURAL ENGINEER.

Revisions		
REV	Description	DATE

**SYNTHEON**  
 ADVANCING THE BUILDING ENVELOPE  
 1555 Coraopolis Heights Road  
 Moon Township, Pennsylvania  
 Phone: 412-490-5037  
 Fax: 412-490-5066

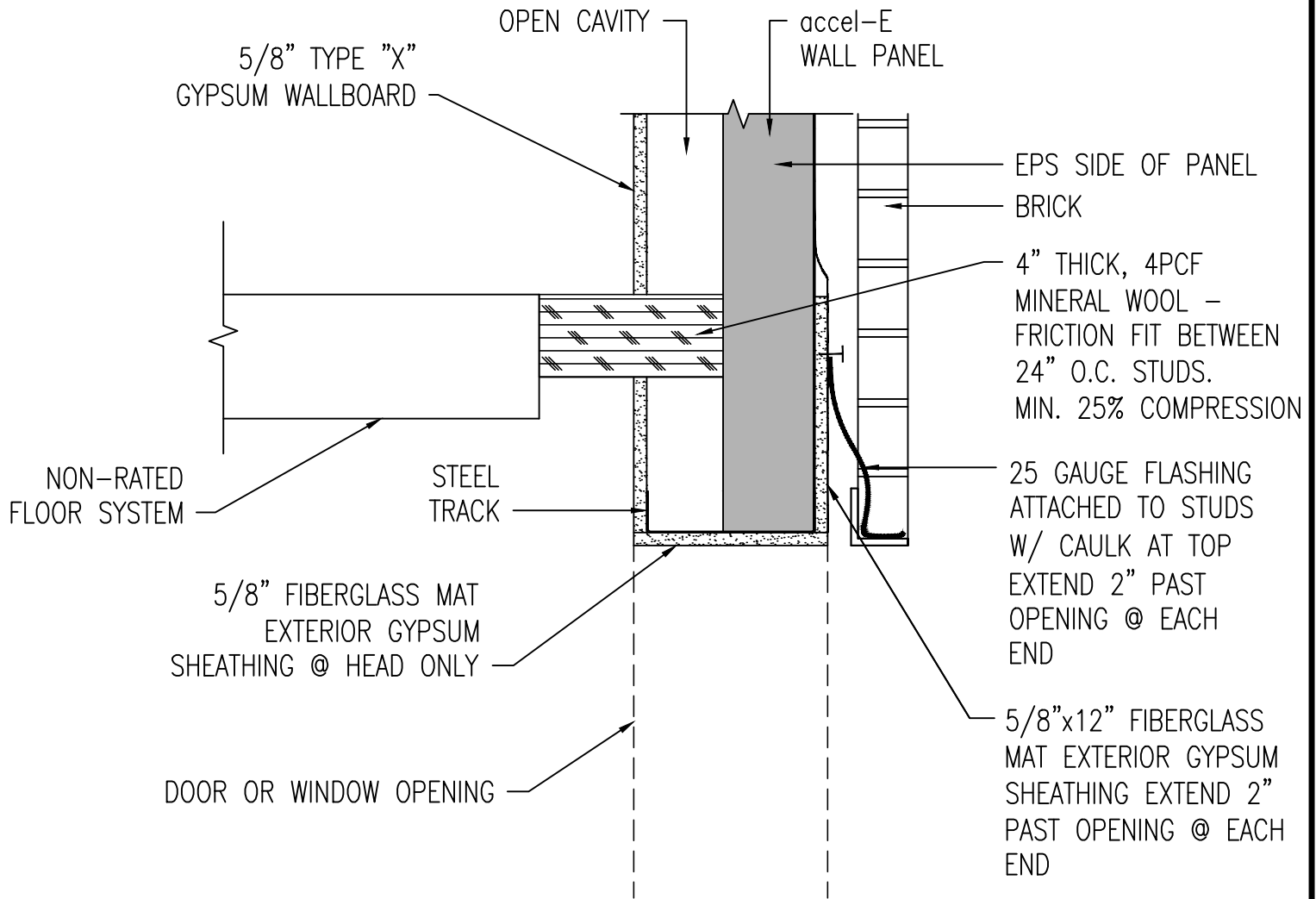
**accetE**  
 Steel Thermal Efficient Panel

**Project Information**  
 NFPA 285  
 ASSEMBLY REQUIREMENT FOR BYPASS CONSTRUCTION WITH BRICK

**Sheet Information**

DATE:	
SCALE:	1 1/2" = 1'-0"
DESIGNER:	HUGHES ASSOCIATES
DRAWN BY:	CRB
CHECKED BY:	DKC

**285B-3**



○ DISCONTINUOUS GYPSUM CONDITION #2  
 (DISCONTINUOUS INTERIOR GYPSUM WITH GAP AT FLOOR SYSTEM)

© COPYRIGHT SYNTHEON INC. ALL RIGHTS RESERVED. THESE DRAWINGS AND MATERIALS CONTAIN INFORMATION AND DESIGNS WHICH ARE CONFIDENTIAL AND PROPRIETARY TO SYNTHEON INC. SYNTHEON INC. OWNS ALL RIGHTS IN AND TO THESE DRAWINGS AND MATERIALS, INCLUDING, BUT NOT LIMITED TO, COPYRIGHT, TRADE SECRET AND OTHER INTELLECTUAL PROPERTY RIGHTS. NO ONE MAY USE, COPY OR DISTRIBUTE ANY PORTION OF THESE DRAWINGS OR MATERIALS WITHOUT THE EXPRESS WRITTEN CONSENT OF SYNTHEON INC.

SYNTHEON INC. ASSUMES NO LIABILITY FROM INCORRECT APPLICATION OR INSTALLATION OF THE STEEL FRAMING SYSTEM. THE USE OF ANY COLD FORMED STEEL PRODUCTS THAT ARE NOT RECOMMENDED BY SYNTHEON INC. IS STRICTLY PROHIBITED AND WILL RESULT IN NULLIFICATION OF THE PROFESSIONAL ENGINEER'S SEAL AND ANY IMPLIED SUPPORT BY SYNTHEON INC. DESIGN GROUP. IF THE TITLE SHEET DOES NOT HAVE A PROFESSIONAL ENGINEER'S STAMP THEN COMPLETE AND DETAILED EVALUATION FOR PRODUCT SUITABILITY MUST BE ACCOMPLISHED BY OWNER'S ARCHITECT OR STRUCTURAL ENGINEER.

Revisions

REV	Description	DATE

**SYNTHEON**<sup>™</sup>

ADVANCING THE BUILDING ENVELOPE

1555 Coraopolis Heights Road  
 Moon Township, Pennsylvania  
 Phone: 412-490-5037  
 Fax: 412-490-5066

**accetE**  
 Steel Thermal Efficient Panel

Project Information

NFPA 285  
 ASSEMBLY REQUIREMENT  
 FOR BYPASS  
 CONSTRUCTION WITH  
 BRICK

Sheet Information

DATE:	
SCALE:	1 1/2" = 1'-0"
DESIGNER:	HUGHES ASSOCIATES
DRAWN BY:	CRB
CHECKED BY:	DKC

**285B-4**